

**The late Rev. Dr. Samuel DeWitt Proctor was Pastor Emeritus of the Abyssinian Baptist Church of New York City and Professor Emeritus at Rutgers University.**

# SAMUEL DEWITT PROCTOR CONFERENCE, INC.

## Present Board Of Trustees

### **Rev. Traci Blackmon**

Christ the King UCC  
St. Louis MO.

### **Rev. Dr. Valerie Bridgeman**

Methodist Theological School in Ohio  
Delaware, Ohio

### **Rev. Dr. Iva Carruthers**

General Secretary, SDPC, Inc.  
Chicago, Illinois

### **Rev. Martin L. Espinosa**

Ray of Hope Community Church  
Nashville, Tennessee

### **Rev. Dr. James A. Forbes**

Healing of the Nations Foundation  
New York, New York

### **Hon. Rev. Wendell Griffen**

New Millennium Church  
Little Rock, Arkansas

### **Rev. Dr. Forrest E. Harris Sr.**

American Baptist College  
Nashville, Tennessee

### **Rev. Dr. Frederick D. Haynes**

Co-Chair, SDPC, Inc.  
Friendship West Baptist Church  
Dallas, Texas

### **Bishop Gregory G. M. Ingram**

Presiding Prelate, 1st District AME Church  
Philadelphia, Pennsylvania

### **Ms. Tyra Mariani**

Co-Chair, SPDC Inc.  
New America Foundation  
Washington, D.C.

### **Rev. Dr. Earl B. Mason Sr.**

Bible Based Fellowship Church of Temple  
Terrace  
Tampa, Florida

### **Rev. Dr. Michael Pfleger**

Community of Saint Sabina Church  
Chicago, Illinois

### **Rev. Dr. Joe Samuel Ratliff**

Brentwood Baptist Church  
Houston, Texas

### **Rev. Dr. William Marcus Small**

New Calvary Baptist Church  
Norfolk, Virginia

### **Rev. Dr. Gina M. Stewart**

Christ Missionary Baptist Church  
Memphis, Tennessee

### **Rev. Dr. Anthony L. Trufant**

Emmanuel Baptist Church  
Brooklyn, New York

### **Ms. Robin P. Williams**

United Food & Commercial Workers  
Washington, D.C.

### **Rev. Starsky D. Wilson**

St. Johns Church & Deaconess Foundation  
St. Louis, Missouri

### **Rev. Dr. Jeremiah A. Wright, Jr.**

Trinity United Church of Christ  
Chicago, Illinois



## THE HUB: Introduction

The Samuel DeWitt Proctor Conference (SDPC) has established the SDPC Innovation Hub to help congregations and communities effectively address economic, educational, political and social challenges, as well as individual and communal histories.

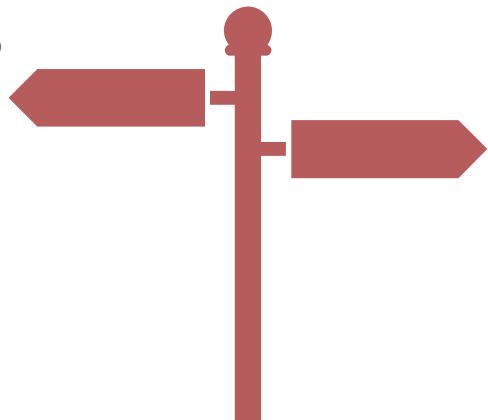
These challenges can be variously related to justice and injustice, our individual and communal woundedness, generational concerns, sexual identity and spiritual alienation.

To this end, the SDPC Innovation Hub (The Hub) guides congregations in the design, development and implementation of needed programs and initiatives to address current and emerging issues.

# THE HUB: Objectives

**Support churches as centers for innovation in the creation of 21st century ministry programs** to effectively address the needs of their congregations and the communities they serve;

- Alert and re-awaken churches and communities to their forgotten or unrealized, internal capacity for sustainability and vitality.
- Foster and support healthy relationships among clergy, congregations, thought leaders and practitioners in order to produce meaningful experiences and additional resources toward the creation of the Beloved Community.



**Rev. Dr. Martin Luther King, Jr.**

**"I do not think of political power as an end.** Neither do I think of economic power as an end. They are ingredients in the objective that we seek in life. And I think the end of that objective is a truly brotherly society, the creation of the Beloved Community."

**Nannie Helen Burroughs**

**"A race transforms itself through its own leaders.** It rises on its own wings, or is held down by its own weight. True leaders never set themselves apart. They are with the masses in their struggle. They simply got to the front first. Their only business at the front is to inspire the masses by hard work and noble example and to challenge them to "come on."

**Samuel DeWitt Proctor**

**"One's ministry is incomplete unless one makes a real effort** to bring the congregation into a more mature awareness of what Christ calls us to do in his name among the least of these."





## **THE HUB:** Program Activities

**Activities of The Hub are available to clergy, leadership teams of congregations, individuals, church leaders and students.**

### **These activities include:**

- One-time events
- Classes
- Workshops
- Opportunities and support for congregations
- Leadership Teams
- Online Program Activities (in which church congregations, leaders, seminarians and others can actively engage face to face)

## **Grant Making To Inspire Innovation for The Church**

The Hub offers a series on grant making and how to design effective proposals to solicit investment and external support for the work of ministry. The Hub also offers a limited number of small grants for congregational leadership teams to refine a project concept, enhance project design, oversee its launch and evaluate its impact.

## **Networking & Netweaving for Innovation and Success**

The Hub convenes living expos to share innovative models of ministry that demonstrate what can be achieved to address specific and pressing realities facing churches in general and the Black church in particular.

## **Congregation & Clergy Peer Support “Soul Circles”**

The Hub is a living resource sponsoring face-to-face forums, conversations and gatherings that can be accessed online. The Peer Learning Soul Circles & Table Talks are offered as Sacred and Holy Conversations where old ministries are expanded and deepened, while new ministries are envisioned and born.

## **College & Seminary Partnerships for Christian Vocational Clarity**

The Hub hosts, produces and archives digital and written exchanges (papers, presentations, video conferencing, etc.) about factors which often affect the sustainability of churches and the diverse communities they serve.

## **Continuing Education Units (CEUs) For Certification in Congregational Learning**

Through our partnerships with seminaries and associations, The Hub offers continuing education units and certifications in areas of theology, pastoral ministry and congregational learning.

Educational programming includes ministry formation classes and advanced study as intensive courses. This continuing education program of The Hub is intended to help individuals and congregations acquire essential capacity-building knowledge and skills, which their churches and communities need for short-term and long-range sustainability.

## **Congregational Shadowing: Observation to Implementation**

The Hub offers congregations that want to grow and change, the opportunity to shadow, observe and participate in different or new congregational models and new methods of ministry.

Through a church mentorship model, participants explore the possibility of learning new ways for spiritual engagement and enlightenment, which may transform individuals, congregations and entire communities.



# THE HUB: Long Term Planning Areas

## Five Engagement Areas

There are five different long-term engagement areas in which leadership teams within a congregation will eventually enroll in throughout their participation in The Hub. To plug into these engagement areas, participants prioritize a specific area which best addresses the individual's or congregation's needs or interests at the time.

**Discipleship, Restart & New Church Start Development:** participants “journey together” in search for pathways of discipline to deepen the spiritual discernment of their calling and communal purpose.

**From Vision & Mission to Strategic Planning:** participants focus on the steps to implement the vision, design, practice and assess their experience of “living out a collective mission.”

**Ministry Leadership Development & Self-Care:** participants discern between serving as “ministry partners” vs serving as “volunteers” to encourage. This distinction helps them explain and embrace “leading as a way of life.”

**Worship & Liturgical Education for Congregation:** participants focus on what it means “To Touch The Spirit,” affirming every aspect of worship and its liturgy, as well as community-wide experiences, as a divine dance in which all participants are part of the sacred announcement of faith.

**A Cup We Can All Drink From – Ministry Outreach:** reminding us to “Hold Up That Which Holds You Up,” participants focus on storytelling and sacred memory to rediscover and reconnect innovative ideas for outreach within the congregation and to the community. “A cup we can all drink from” signals an inclusive table for the Beloved Community, leadership of servanthood and ministry outreach as purposeful Christian living - hearing from God (a call) to accepting that call (a calling) to living out that call (as a vocation), therefore, being transformed as individuals and communities of faith.

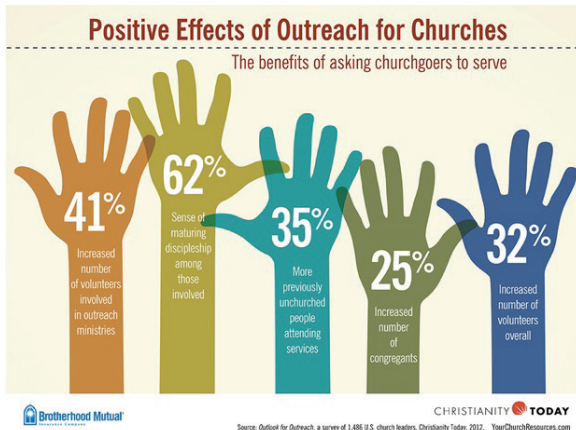




# THE HUB: By The Numbers

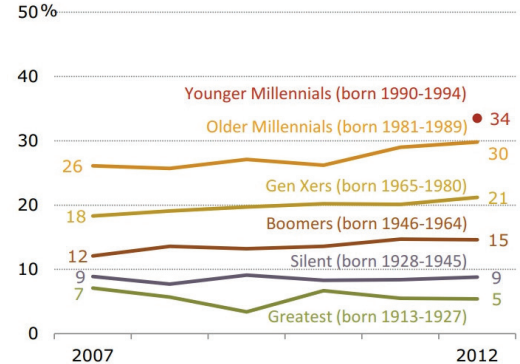
## Strategic & Sustainable

Used strategically, the SDPC Innovation Hub can help improve the scale and sustainability of church congregations, whether small or large. The Hub can do this by helping congregations explore various ways to attract new members, keep old members engaged and build relationships that further empower congregations to activate positive changes in the church and community.



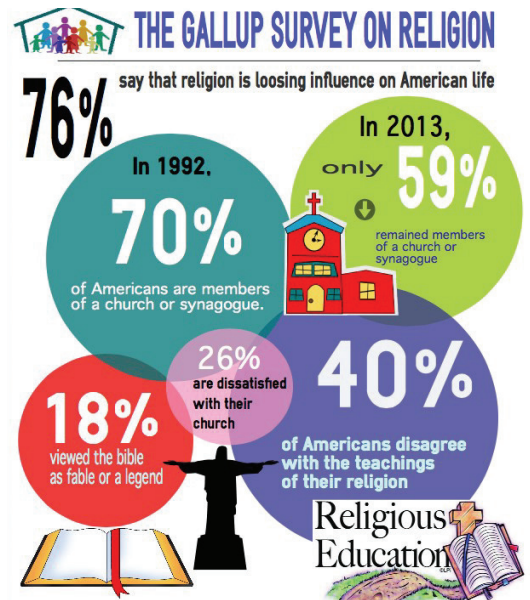
## Recent Trends in Affiliation, by Generation

% of each age cohort that is unaffiliated



Source: Aggregated data from surveys conducted by the Pew Research Center for the People & the Press, 2007-2012.

PEW RESEARCH CENTER

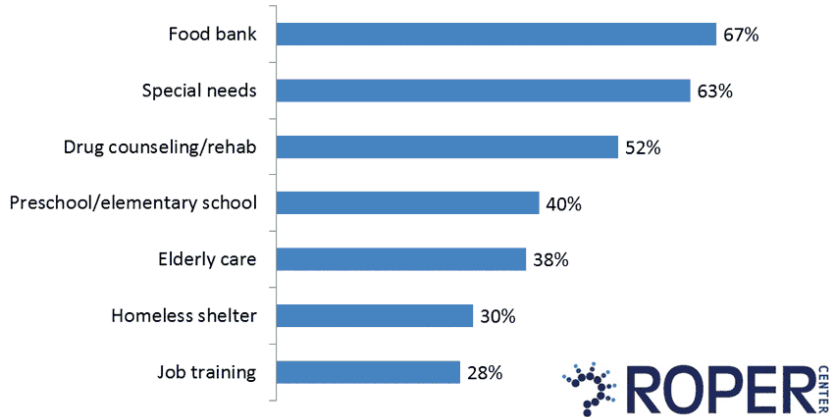


Gallup Data. Infographics by Joe Quintana 2014 (courtesy of www.easel.ly)

### Services Provided by Churches Attended by Black Americans

Does your church provide any of the following services? *BAMPAC, 2001 survey of national African American Registered Voters*

*% saying their church provides these services, among those who are church members, 83%*



**“African American urban & suburban church leaders need resources on social ministry creation and maintenance, new options for funding social ministries and innovative strategies for partnering with other organizations on community-wide social initiatives before a significant impact around issues of social ministry will be seen.”**

### **THE BLACK CHURCH AND SOCIAL SERVICE MINISTRY**

A Report by Dr. David Daniels

The Henry Luce Professor of World History at McCormick Theological Seminary

# Envision The SDPC Innovation Hub

Resourcing congregations and communities to develop collaborations and capacities to achieve the following:



**IT'S IN OUR HANDS**

With Vision...by Faith...Through Action

- **Provide a bridge connecting churches,** lay leaders and other faith-related organizations and businesses.
- **Partner with seminaries** to provide classroom space enabling them to expand their student outreach and the community's accessibility to educational resources.
- **Provide classes on financial literacy** and management to churches and lay leaders.
- **Connect pastors, academics and artists** to study and promote the engagement of the arts with the church and theology.
- **Provide practice, performance, studio space** and equipment for artists of all kinds to fuse their practice of art into their practice of faith.
- **Provide shared resources** to churches that expand their operational capacity such as copying, bulletin printing and website development.
- **Establish a purchasing cooperative** that will allow churches to purchase commonly used supplies, i.e. paper towels, office supplies, etc. at a discounted rate.
- **Expand on international outreach** that supports mission projects and trading zones.
- **Offer opportunities** to participate in SDPC's United Nations activities as a Non Governmental Organization (NGO).
- **Offer an archive and research infrastructure** that will support the Black faith community and social justice advocacy.
- **Create an archive and research facility** (physical and online) that will become a national destination for information on the Black faith community and social justice issues.

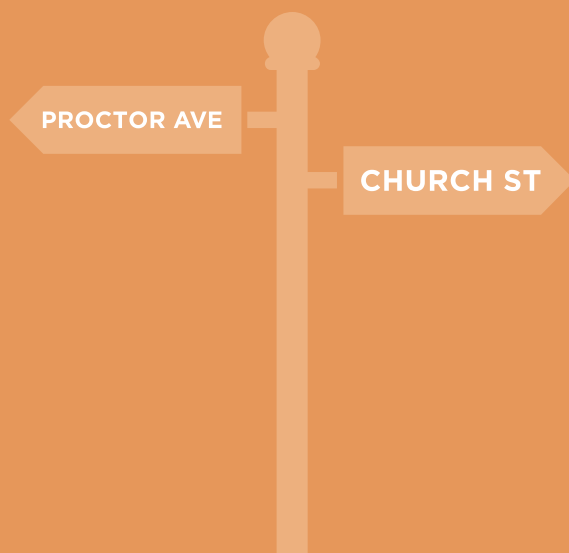


# SDPC INNOVATION HUB

for Congregational Sustainability

## **A Cup We Can All Drink From**

Connecting the Church, Community and Academy



## **Samuel DeWitt Proctor Conference, Inc.**

4533 South Lake Park Avenue, Chicago, IL 60653

Phone: (773) 548-6662

Email: [info@sdpconference.info](mailto:info@sdpconference.info)

**[www.sdpconference.info](http://www.sdpconference.info)**



**IT'S IN OUR HANDS**

With Vision...by Faith...Through Action